



NEW SPORTS HALL CENTRE

Dear Sir / Madam,

Earlier this year the Premier Mark McGowan announced State Capital budget funding of \$5 million for our school to support the build of a new Sports Hall Centre, within the school site.

The School Leadership team and School Board have been working closely with the Department of Education, Department of Finance and Architects to develop design plans for the new building, its location within the school grounds and the facilities to be included. Various surveys have been done to determine the best location of the new building to meet school needs and minimise impact to the existing landscape. Plans are now finalised and the contract has been tendered and awarded.

Final site inspections and site set up will be commencing from Tuesday 28th September. The building works including landscaping is estimated to continue until the end of August 2022. Management and compliance arrangements for the building site including security, noise, dust, deliveries and times when construction works will take place have been established with Firm Construction. Every attempt will be made to minimise disruption to our neighbours and community. Should you have any enquiries regarding the building site and construction works, you can contact Firm Construction on 9207 7888.

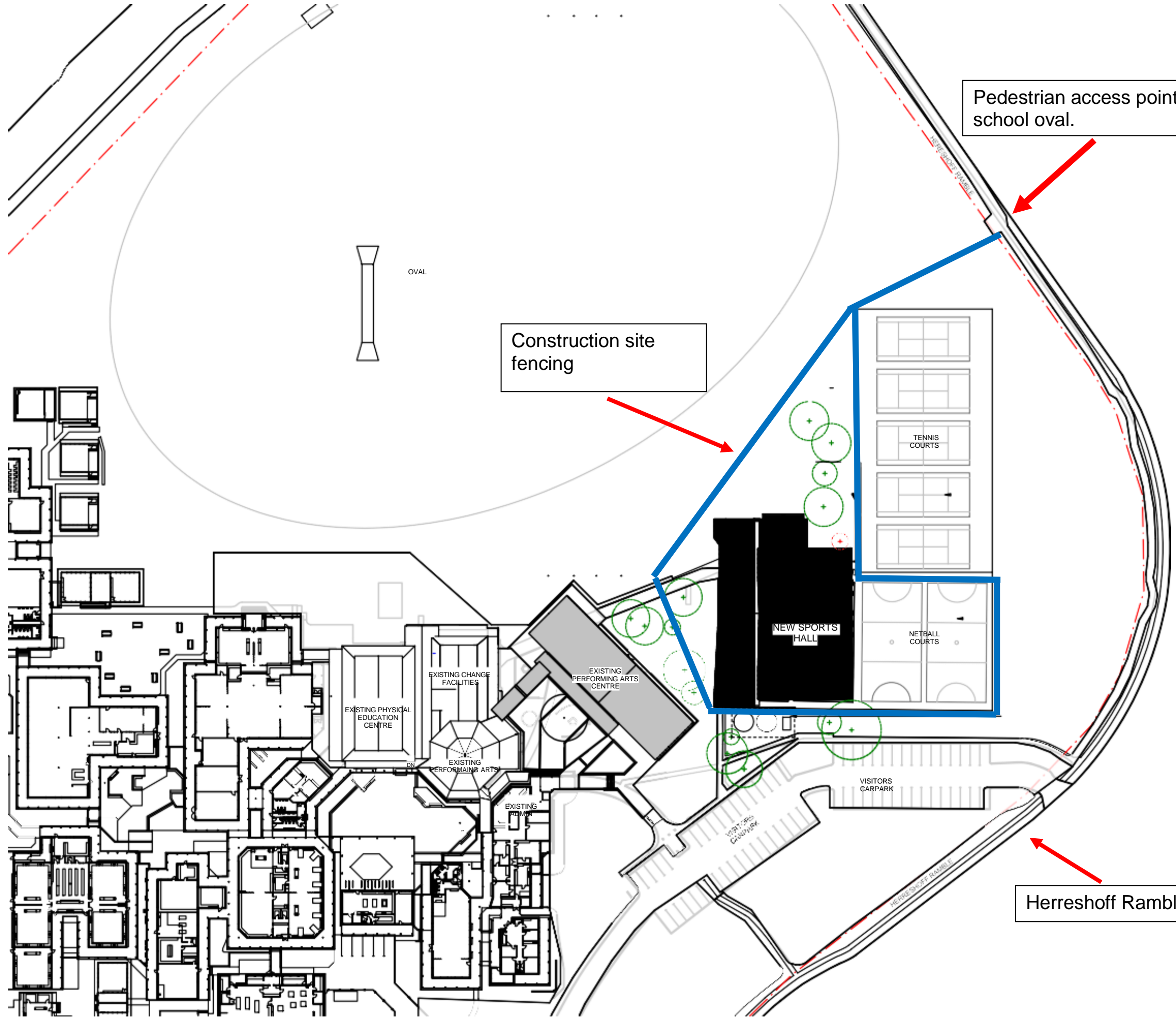
Access to the school oval via the passage leading from the school carpark to the rear of the Performing Arts Centre or basketball courts will no longer be available as this is part of the construction site. Pedestrian access to the oval outside school hours will be available via the low white bar gate further along Herreshoff Ramble. The basketball courts will not be available to the public during the building project.

Artist and a site location plan is enclosed for your information. They can also be viewed via our school website www.oceanreef.wa.edu.au. Further updates on this exciting new facility will be made available as construction continues. Should you have any questions, please contact the school direct on 6206 2700 or by email to oceanreef.shs.enquiries@education.wa.edu.au

Yours faithfully,

Jayne Dawson – Manager Corporate Services

Dated: 23 September 2021



Pedestrian access point to school oval.

Construction site fencing

Herreshoff Ramble